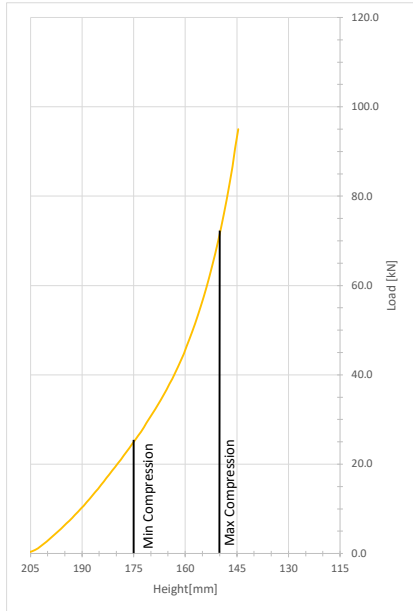
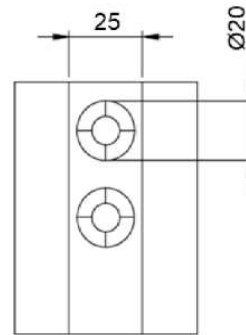
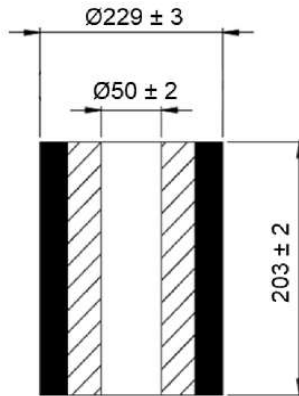


Continental SAM

DN 229 DH 203 IN 50



Compression [%]	15	20	22.5	25	27.5
Load [kN]	24.6	38.0	46.3	57.5	72.9
Height [mm]	175	165	160	155	150
Spring Rate [kN/m]	1076	1487	1928	2627	3669
Effective Deflection [mm]	23	26	24	22	20
Natural Frequency [Hz]	3.3	3.1	3.2	3.4	3.5
Maximum OD [mm]	247	256	260	264	268
Weight [Kg]	8.01				



Continental SAM is the solution for spring replacement and vibration isolation. With its resistant, durable and economical design it helps to cut costs in nearly all industrial applications.

- > better working conditions due to a dramatically reduced noise level
- > reduced downtimes
- > compact design
- > high load-bearing capacity
- > reliable even in damp or corrosive conditions
- > maintenance-free
- > safe due to the absence of moving parts
- > reliable even in extreme temperatures (-40°F to 167°F, -40°C to +75°C)